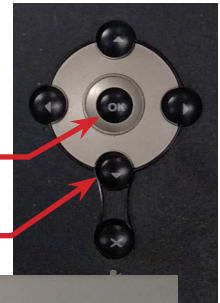


Yealink SIP-T38G:

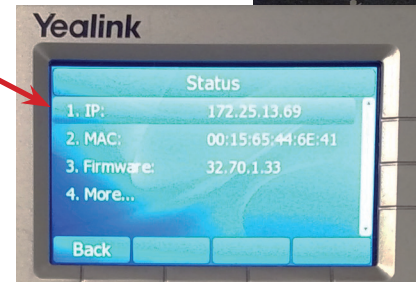
1. Access the Sip Device's IP Address.

- In order to provision the phone efficiently, you will need to log into the phone through its web interface.

- Press "OK" button
 - or press Menu->Status.
 - Press "up" or "Down" arrows or to scroll through the list and view information.
- The Phone Status will appear on the Screen.

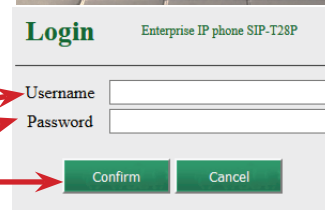


- Yealink Status Screen
 - Write down the phones IP Address.
 - If the IP address shows 0.0.0.0
 - Verify all connections to the Network.

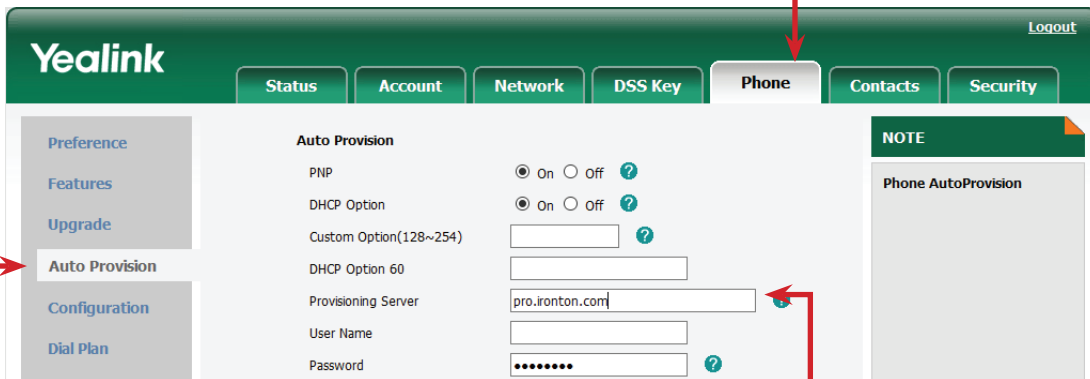


2. Accessing the Web Interface.

- Enter the IP address into the web browser address bar.
- The Login screen will appear.
 - Enter the Username in the text field.
 - Enter the Password in the text field.
 - Select the Login button.

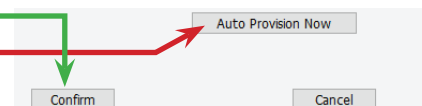


- The Phones Status Screen will open.
 - Select the Setting Tab.
 - Select Auto Provision in the Left hand Column.



- Adding the Provisioning Server URL
 - Enter the URL in the Server URL text box.
 - pro.ironton.com

- Select the Confirm button at the bottom of the page.
- Select the Auto Provision Now button.
 - The Phone will reboot and download the configuration.
 - This process can take up to 10 minutes.
 - Do not power down the phone during this process.



• Please Note:

- Provisioning Servers require an association with the Sip Device's MAC address in order to auto provision.
- Contact Tech Support for additional help.